

2027-28
Admission

Postgraduate Studies (MPhil-PhD) in “Physics” and “Materials Science and Engineering”

Features and Strengths

State-of-the-art research and participation in international collaborations (*CERN, LIGO, Daya Bay Neutrino project*)

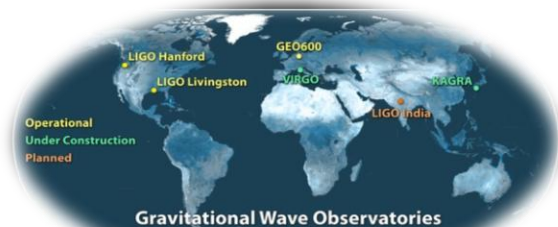
Close supervisor-student relationship in collaborative mode

Many of the students' works publishable in high impact journals (e.g. *Nature, Nature Physics, Nature Nano Technology, PRL, Advanced Materials*, etc.)

Financial support for conference presentations

Excellent facilities (experimental and computational)

Employment opportunities ranging from academic, governmental, and private sector positions



LIGO Scientific Collaboration



Frequent discussions and interactions between students and supervisors



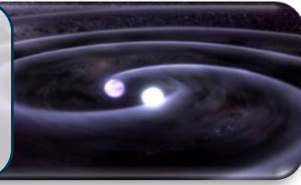
Our students have won a number of awards and scholarships in various academic activities



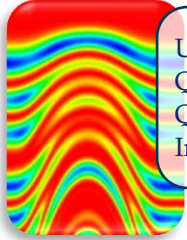
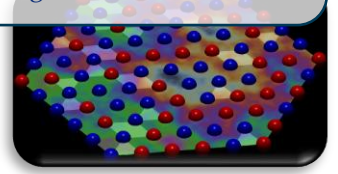
High-performance powerful clusters for parallel calculations

Research Areas

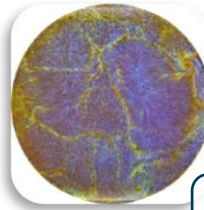
Particle Physics, Cosmology,
High Energy Physics,
Gravitational Waves, Pulsars,
Star Formation



Condensed Matter Physics, Electronic and Optical
Properties of Semiconductor Nanostructures,
Interacting Electron-Phonon Systems, Strongly
Correlated Systems, Topological Matters



Ultracold Atoms and Molecules,
Quantum Matters, Quantum Optics,
Quantum Sensing, Quantum
Information and Quantum Physics



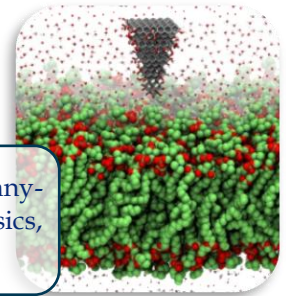
Complex Systems, Turbulence

**Flexible scheme to
best match students
and supervisors'
research interests**

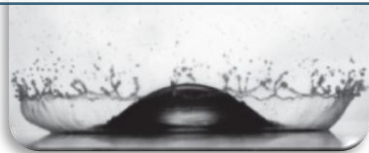
Surface Science and Nanostructures on
Surfaces, Synthesis and Property of
Metal and Semiconductor Nano-
structures, Plasmonics Properties of
Metal Nanostructures, Optical
Properties of Semiconductors, Non-
linear Optical Properties of Organic
Materials



Computational Physics, Many-
body Computational Physics,
Computational Biophysics



Bacterial Motion, Colloids, Glass
Formation, Liquid-Solid Impact



Fabrication and Characterization of Biomorphic
Materials, Ceramic-Metal Matrix Compounds,
Thin Film Growth and Magnetic Oxides,
Nanostructured Metal Composites, Nano-Bio
Interface and Nanoplatfrom for Theranostic
Applications, Energy Storage Materials



Destinations After Graduation

Higher Institution

Tenure track faculty and postdoc positions, research fellows, etc.

- US: Massachusetts Institute of Technology, Johns Hopkins University, University of Illinois at Urbana-Champaign, UC Santa Barbara, Boston College, Washington University, ...
- Europe: University of Ulm (Germany), University of Twente (Netherlands), University College London (UK), ...
- Asia: The Chinese University of Hong Kong, HKUST, Peking University, Tsinghua University, Fudan University, National University of Singapore, The University of Tokyo, National Taiwan University, ...

Commerce & Industry

Research scientists, engineers, consultants, analysts, etc.

- China: ASTRI, ClusterTech Limited, SAE Magnetics, Science Park (HK), Jinrui Futures, Bank of China, ...
- Asia: APEC Climate Center (Korea), ASM Pacific Technology Ltd. (Singapore), Sony Corporation (Japan), ...
- International: Bloomberg, Environmental Resources Management, Intel, KPMG Netherlands, EDG Inc. (US), iFire Co (Canada), ...

Government

Postdoctorals, Scientific officers, etc.

- Education Bureau (HK), Hong Kong Observatory, Department of Health (HK), Bureau of Meteorology (Australia), National Astronomical Observatory of China, National Institutes of Health (US), ...

Facts and Figures

27	Faculty staff	~190	Students currently enrolled in M.Phil. and Ph.D. degrees
~80	Courses (PG & UG) offered by the department	HK\$19,100-19,660	Monthly studentship for regular full-time RPg students (2025-26)
2 years	Normative study period of an M.Phil. degree	HK\$28,400	Monthly stipend for Hong Kong PhD Fellowships* (2025-26)
3-4 years	Normative study period of a Ph.D. degree	HK\$49,500	Annual tuition fee (2027-28) (Tuition waiver for local students)

* Hong Kong PhD Fellowship Scheme (HKPFS) (<https://cerg1.ugc.edu.hk/hkpfs/>), established by the Hong Kong Research Grants Council (RGC), provides an annual stipend of HK\$340,800 and a conference travel allowance of HK\$14,200 per year for each awardee.

How to Apply

Project lists and detailed information

Physics (PHYS)



Materials Science and Engineering (MSEG)



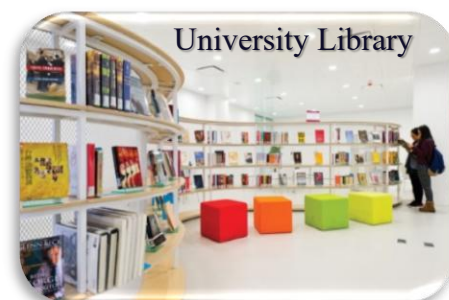
- Complete and submit [Online Application Form](#) before the deadline **10 June 2026***.
- Required supporting documents to be uploaded to the online application system:
 1. copy of official transcript of academic records of all tertiary level studies and official explanatory notes indicating the grading scheme of the University;
 2. curriculum vitae; and
 3. research/personal statement, indicating the particular study field you are interested in.Recommendation letter from two referees, should be sent directly by the referees by email to pgadm@phy.cuhk.edu.hk.
- Shortlisted applicants will be invited to the Physics Summer Workshop and the entrance examination between 7-9 July 2026. Accommodation (sharing room) will be provided for non-local applicants. Invitation will be sent to shortlisted applicants via email.
- Admission offer will be sent to successful applicants via e-mail by end of July 2026.
- Enquiries:
 - pgadm@phy.cuhk.edu.hk (PHYS)
 - pgadm-mse@phy.cuhk.edu.hk (MSEG)

* Late applications will be considered, but accommodation expenses may have to be borne by the applicants.

Living on Campus / in Hong Kong

Services and Facilities at CUHK

- ★ **University Library** ★ has one of Hong Kong's most comprehensive collections
- ★ **University Health Service** ★ provides primary medical care
- ★ **Sports Facilities** ★ include a sports field for track and field, gymnasiums, an Olympic-sized swimming pool, tennis and squash courts, weight-training rooms and a water-sports centre
- ★ **Independent Learning Centre** ★ provides students with an immersive language-learning environment to improve their Chinese and English proficiency
- ★ **Office of Student Affairs** ★ offers professional advice on personal growth and development
- ★ **Postgraduate Student Society** ★ organizes and promotes academic and recreational activities (such as student conference, movie nights, hiking trips, etc.)



Hong Kong • Our Home

The universities adopt international standards in curriculum design and quality assurance – **qualifications awarded are internationally recognised**

A high efficiency, modern and vibrant metropolis – **offering super global, regional and local connectivity**

Studying in Hong Kong is full of opportunities to enrich your study life, it will be an amazing experience!

A melting pot of Eastern and Western cultures – **Chinese and international cuisine, brands and integrated entertainment**

World-class conditions in finance, trade, innovation and transportation – **serving as a pilot city in the Guangdong - Hong Kong - Macao Greater Bay Area**

